



Integration with Cobb StreetTUNER

PLXApp015 (V1.1) February 7, 2006

Summary

This application note outlines the procedures for setup and installation of the **PLX M-300 USB Version** for Cobb StreetTUNER to properly interpret the air/fuel ratio. Interface is done through the user's USB port on the PC.

ONLY the [M-300 USB Version](#) is compatible with Cobb StreetTUNER. M-250, M-300 standard versions are NOT compatible! Please contact PLX Devices for more details.

Hardware Setup Procedure

1. Download the USB Device Drivers from here:

<http://www.plxdevices.com/USBRXModuleDrivers.htm>

2. When the device is plugged into the USB port the first time, Windows will prompt the user to install the USB driver, as shown in the following screen:



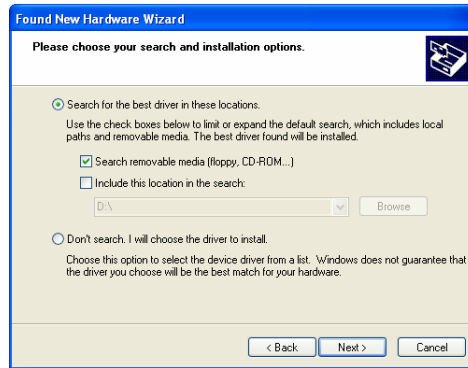
3. Select "Install from a list or specific location" and click "Next >". Then select, "Search for the best driver in these locations," checkmark "Search removable media," and click "Next >". Windows will then search for the appropriate driver.

PLXAPP015 (V1.1) February 7, 2006

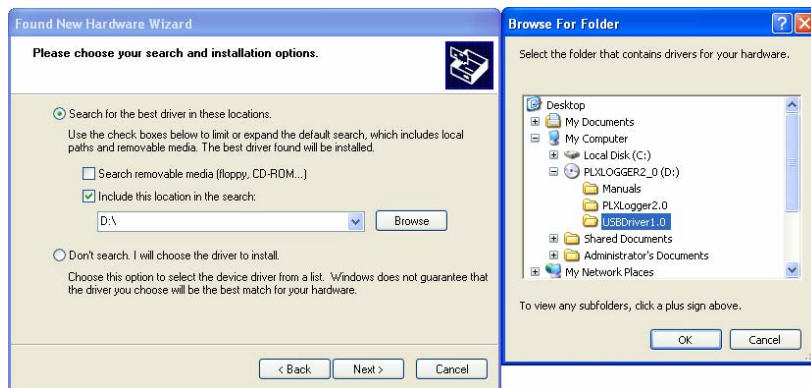
www.plxdevices.com

(408)745-7591





- The subsequent screen will prompt the user to install the USB driver. The device driver can be downloaded from the PLX website under the support tab. Click, "Browse" and select the folder where your device drivers are located.

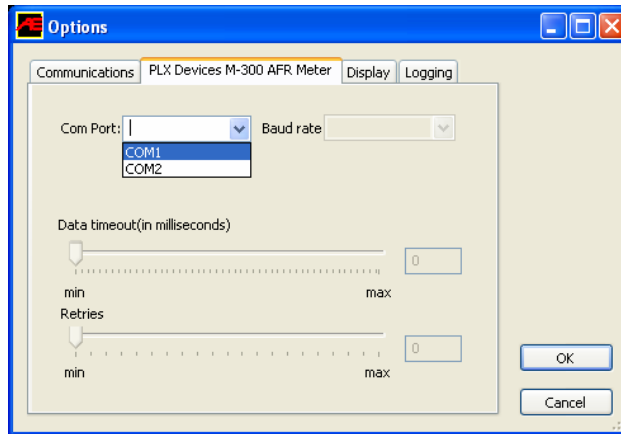


- To double check if the USB device is properly installed, check "Start" → "Control Panel" → "Systems" → "Hardware" → "Devices Manager." If the installation was successful, the "USB Serial Port" will be listed under the "Ports". Make a note of the COM port number. Street Tuner will ask for it later.

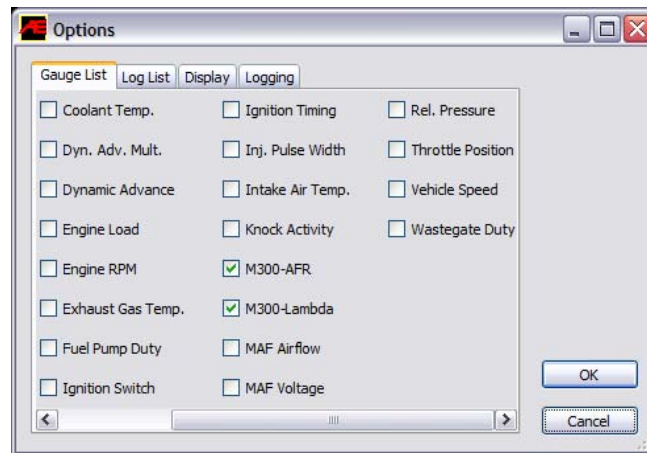


Software Setup Procedure

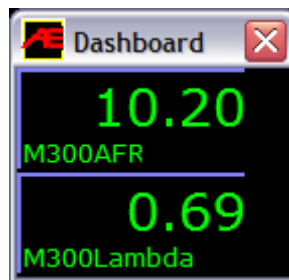
- Download http://www.accessecu.com/support/M300USB_Packet.dll and save the file into the StreetTUNER/Plugins directory.
- Load the software and go to Edit | Configure Options. Select the COM port number the M-300 USB version is using



3. Connect to the vehicle as usual by going to ECU | Live Tuning.
4. Once connected, go to Edit | Configure Options



5. Select the M300 checkmarks under "Display" or "Logging" then click OK.
6. Go to View | Dashboard. Double check if the M-300 digital display is reading the same as the dashboard.



7. To view this data in logged form, go to ECU | Data Logging to activate data logging. Then go to ECU | Data Logging again to deactivate logging. When the user is presented with the option to view the log file, select yes and it will be shown in the log viewer.

Revision History

Version 1.0 (10/26/05)	Initial release
Version 1.1 (2/7/06)	Updated text with location of USB Device Driver Files